

## Pool Policies

### Child Admission Policy

Children under the age of 8 years must be supervised by a responsible adult (16+) at all times in the pool area and be accompanied into the Pool water.

Weak or non-swimmers must wear suitable recognised buoyancy aids and remain in close contact with their supervisor in the shallow end at all times.

Infants should wear aqua nappies if appropriate which can be purchased from the office.

### Admission Policy

Under 4 years old: 1 to 1 ratio. Goes to 2 to 1 if suitable buoyancy aids are used.

4-7 years: 2 to 1 ratio. Goes to 3 to 1 if suitable buoyancy aids are used.

8+ years: Competent Swimmers unsupervised but need to be able swim 2 lengths of a recognised stroke. Proof of swimming skills may be required. Armbands are available from the office to hire or buy.

### Storm Closure Policy

In the event of a thunder storm we ask you to leave the water immediately. After 20 minutes without thunder an all clear to re-enter the Pool will be sounded.

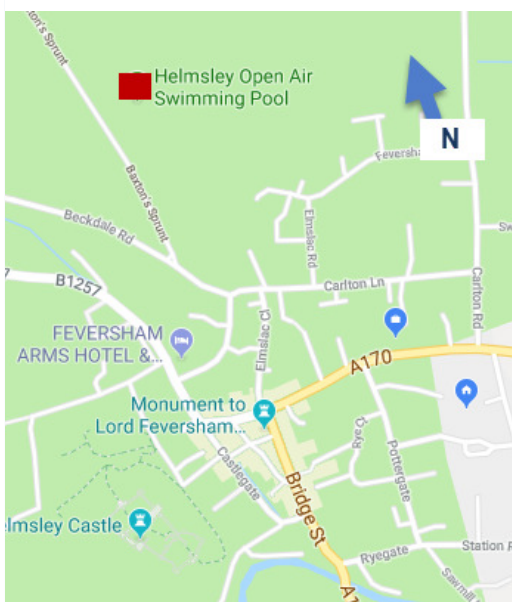
**Helmsley Pool regrets it is unable to offer refunds for lost swimming time as the weather is out of our control.**

### Last Minute Changes Policy

No one likes to arrive at any venue to find its offering closed or suspended. For this reason at the bottom of the homepage on [www.helmsleyopenairpool.org](http://www.helmsleyopenairpool.org) we have a Message and Update Board if you are coming a long way or are a large party we ask that you check the notice board prior to setting off.

**WE ALSO LIST ANY IMMEDIATE CHANGES ON FACEBOOK**

## Helmsley Pool & Sports Ground



### Helmsley Open Air Pool

#### Site Address

Baxtons Lane

Helmsley

North Yorkshire

YO62 5HT

Tel No: 01439 408010

Email: [info@helmsleyopenairpool.org](mailto:info@helmsleyopenairpool.org)

#### Admin Address

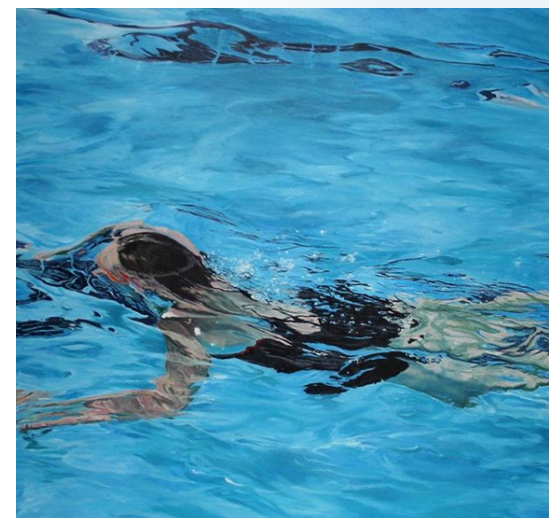
Helmsley Open Air Pool

The Old Vicarage Bondgate

Helmsley N. Yorkshire YO62 5BP



Helmsley Open Air  
Swimming Pool



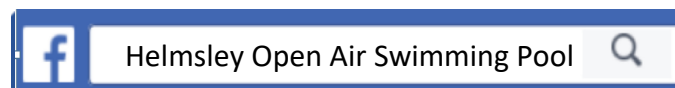
## 2019 Season

[www.helmsleyopenairpool.org](http://www.helmsleyopenairpool.org)

Tel: 01439 408010

*(answerphone outside opening hours)*

***We hope to open earlier this year.  
Possibly for the late May Bank Holiday weekend.  
Please check the website!***



## Admission Charges

Adult	Juniors	Conces	Family	Spectators
£5.00	£3.50	£3.50	£17.00	£2.50

## Season Tickets

£50.00	£35.00	£ 35.00	£170.00
--------	--------	---------	---------

12 Swims for the price of 10

## Private Hire

1 Hour	2 Hour
£50.00	£97.75

## Events

All Events are charged by ticket. Please consult the website for up to date pricing of individual events.

## Ticket Pre-purchase **NEW**

In 2017 & 2018 we trialed a system of purchasing tickets on the day of your visit **for any session that day**. This involved visiting the Pool and making your purchase **on the day** and for your chosen session. We are unable to make telephone sales as we have no 'cardholder not present' authority but we can **now sell for any day** we are open when you visit the Pool.

So if you're coming to Helmsley and want to purchase ticket for next Thursday,

**WE CAN DO IT!**

Session Times	900-1100 hrs	1115-1300 hrs	1315-1500 hrs	1515-17.00 hrs	1715-1900 hrs	1915-2145 hrs
Monday						
Tuesday						
Wednesday						
Thursday						Adult Lane Swim
Friday						
Saturday						
Sunday						

	Available for Private Hire Please call to book		Open Swim Sessions
	Adult Only Session		Fun Session

## Ticket Information

**Adults** 17 years to 64 years **Juniors** 4 years to 16 years

**Concessions** over 65 years, disabled and students.

**Family** 2 adults & max 3 children.

- On busy days there may be queues but you can pre-pay.
- Once our capacity is reached we admit on a one out one in basis.
- Occasionally an event may overlap an Open Swim session. This will be kept to a minimum.
- We aim to operate the Pool at a temperature between 26°C-28°C but because of issues beyond our control sometimes the temperature drops. We advise Pool users when this happens.
- There is a 15 minute gap between sessions (see timetable) to allow for water testing and tidying the Pool.

- We operate a message board on the Pool website. If you are traveling a long way we ask that you check this board for any messages about
- occasional closures.
- For private hire we require a deposit of £47.50 to be paid at the time of booking. Please call the Pool to book or email from the website. The charge includes Lifeguards which are mandatory and whose instructions on pool use must be followed.
- We offer a limited service of hot drinks, snacks, ice cream, chocolate, crisps etc and sometimes cake!!
- The Pool is operated as part of Registered Charity No. 523358 and receives support from Helmsley Town Council, Ryedale District Council and a number of corporate and private donors.
- **New for 2019** Thursday evening Adult Lane Swimming (coaching available and optional)